

Odessa Wharf London SE16

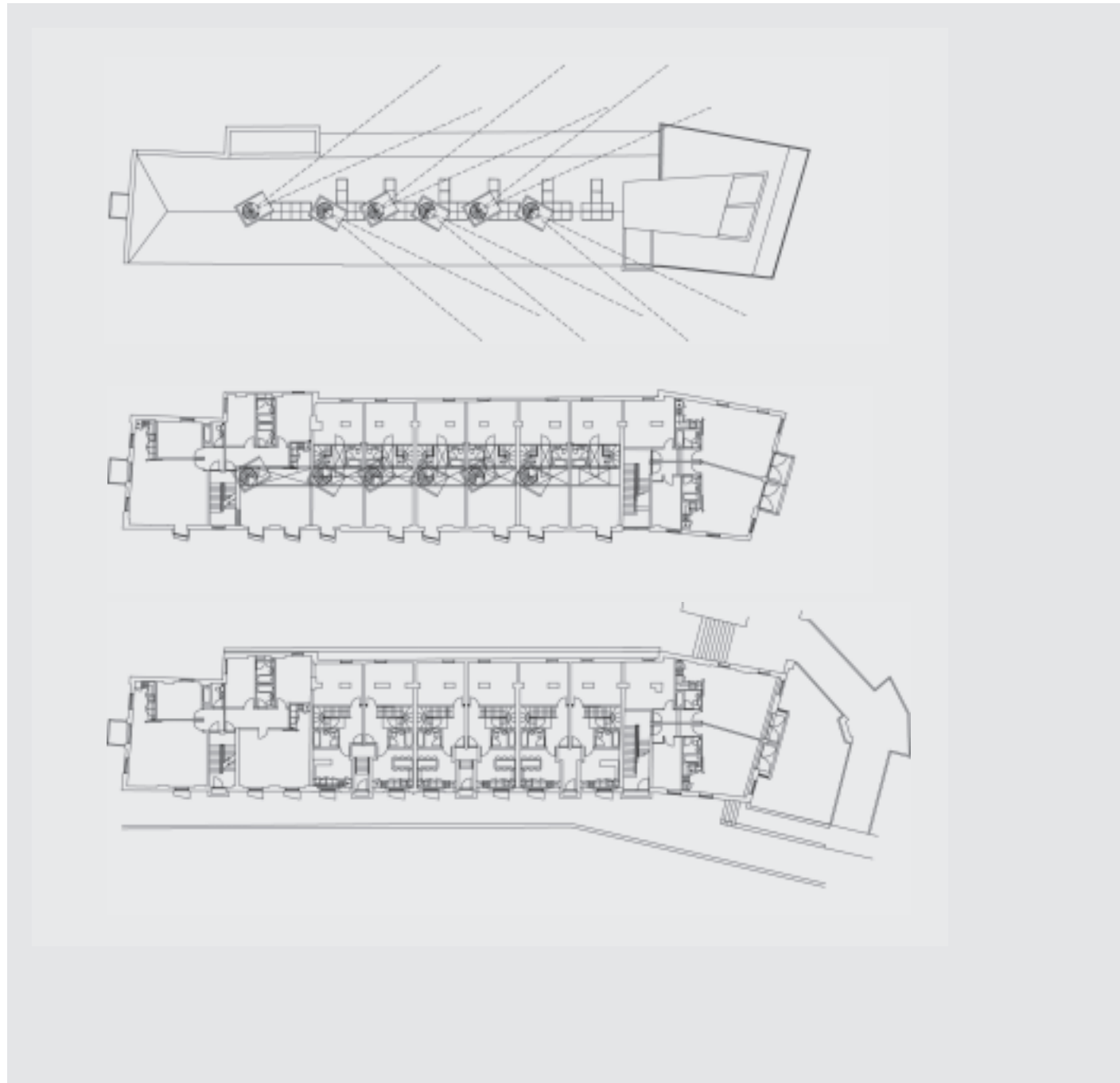
a witty, skilful and
sensitive response
to a challenging
restoration and
conversion problem

Designer
Fletcher Priest Architects
and Torben Rix

Developer
Greenholme
Investments Ltd

Contractor
Vascroft Contractors Ltd

Planning Authority
London Borough of
Southwark

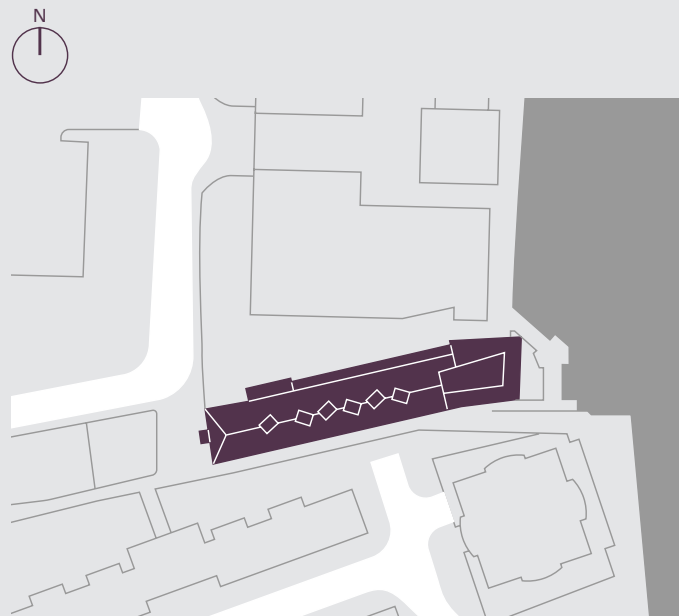




A previous project award winner planned to deal with the numerous constraints on this heavily constricted riverside warehouse site through redevelopment. A new owner has sought an alternative solution by retaining the existing building, poorly converted to residential use in the sixties and seventies.

Overlooking problems mean that the bulk of the fourteen apartments have to rely on angled, louvred oriel windows for views out to the river from their upper floor living rooms. But, to compensate, these double height rooms reach up into the rafters, pierced by a spiral stair which terminates in a rooftop lantern eyrie, just large enough for a few books and a fold-down seat.

Above the apartments on the river frontage, a double-height timber-clad communal pavilion and roof deck allow access to further space and views, completing a witty, skilful and sensitive response to a challenging restoration and conversion problem.



- 1 3 4
- 2
- 3 5

- 1 Roof plan
- 2 Upper Flr plan
- 3 Lower Flr plan
- 4 River elevation
- 5 Section
- 6 Site plan